

54/12
DRAWING NUMBER

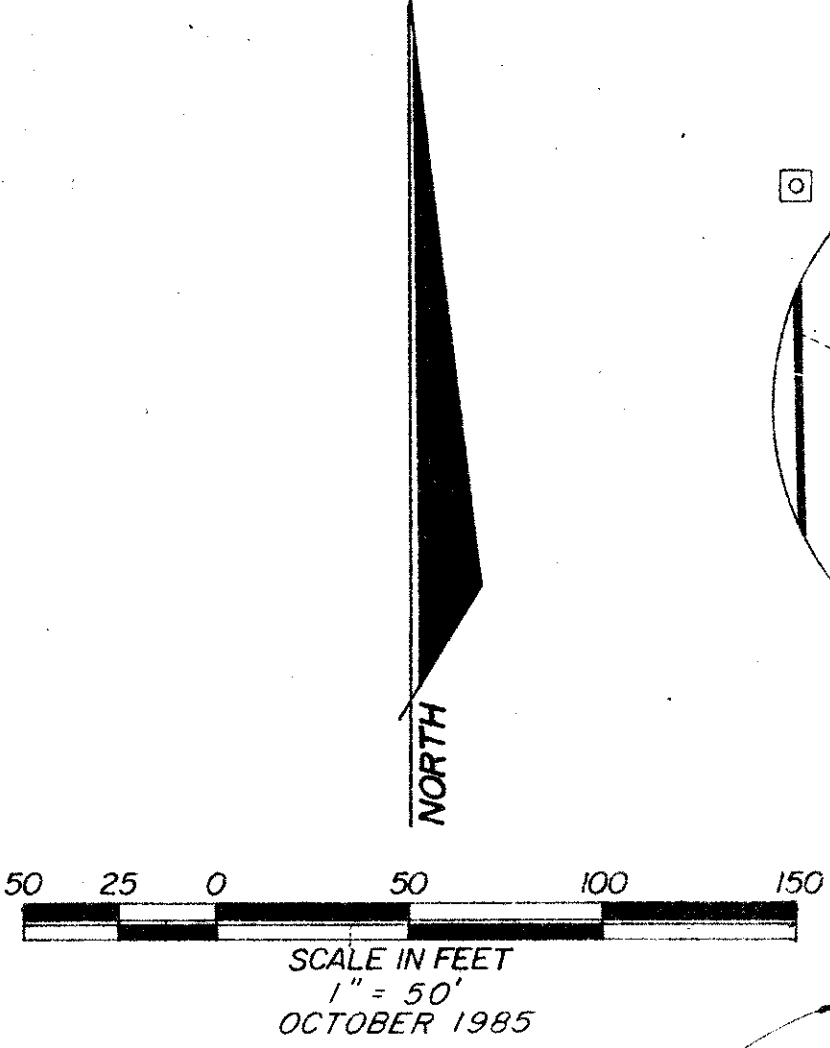
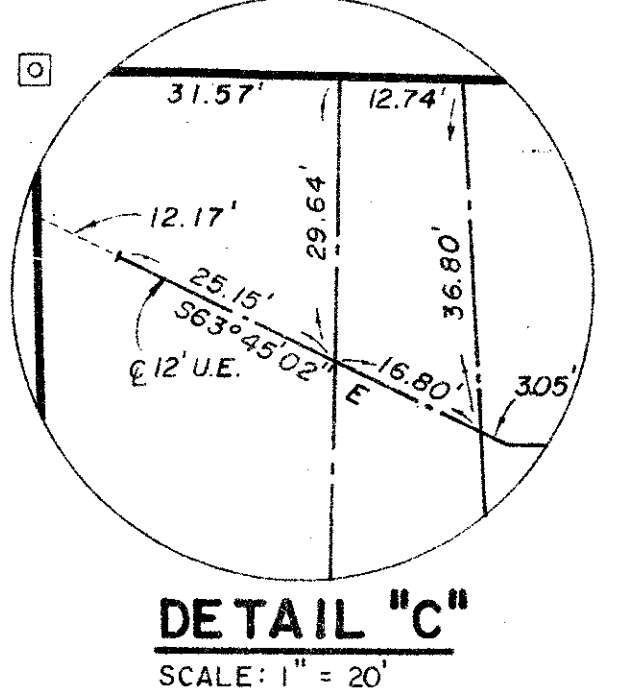
ASHLEY LAKE PARK

"A PART OF COUNTRY CLUB TRAIL, A P.U.D."
A REPLAT OF A PORTION OF TRACTS E & F PLAT No.1 CEDAR POINT (P.B. 30, PGS. 178 & 179, P.B.C.R.)
SECTION 26, TOWNSHIP 45 SOUTH, RANGE 42 EAST
PALM BEACH COUNTY, FLORIDA

Prepared By:
CRAIG A. SMITH & ASSOCIATES
CONSULTING ENGINEERS & SURVEYORS
1000 WEST McNAB ROAD
POMPANO BEACH, FLORIDA
By: **FREDERICK E. CONROD III, P.L.S. #2816**

P.U.D. TABULATION
AREA = 14.993 ACRES
NO. OF UNITS = 300
DENSITY = 20 DU/ACRE

STATE OF FLORIDA } S.S.
COUNTY OF PALM BEACH }
THIS PLAT WAS FILED FOR
RECORD AT _____ THIS
DAY OF _____, 1986, A.D.,
AND DULY RECORDED IN PLAT BOOK
No. _____ ON PAGES
AND _____
JOHN B. DUNKLE, CLERK
BY: _____, D.C.

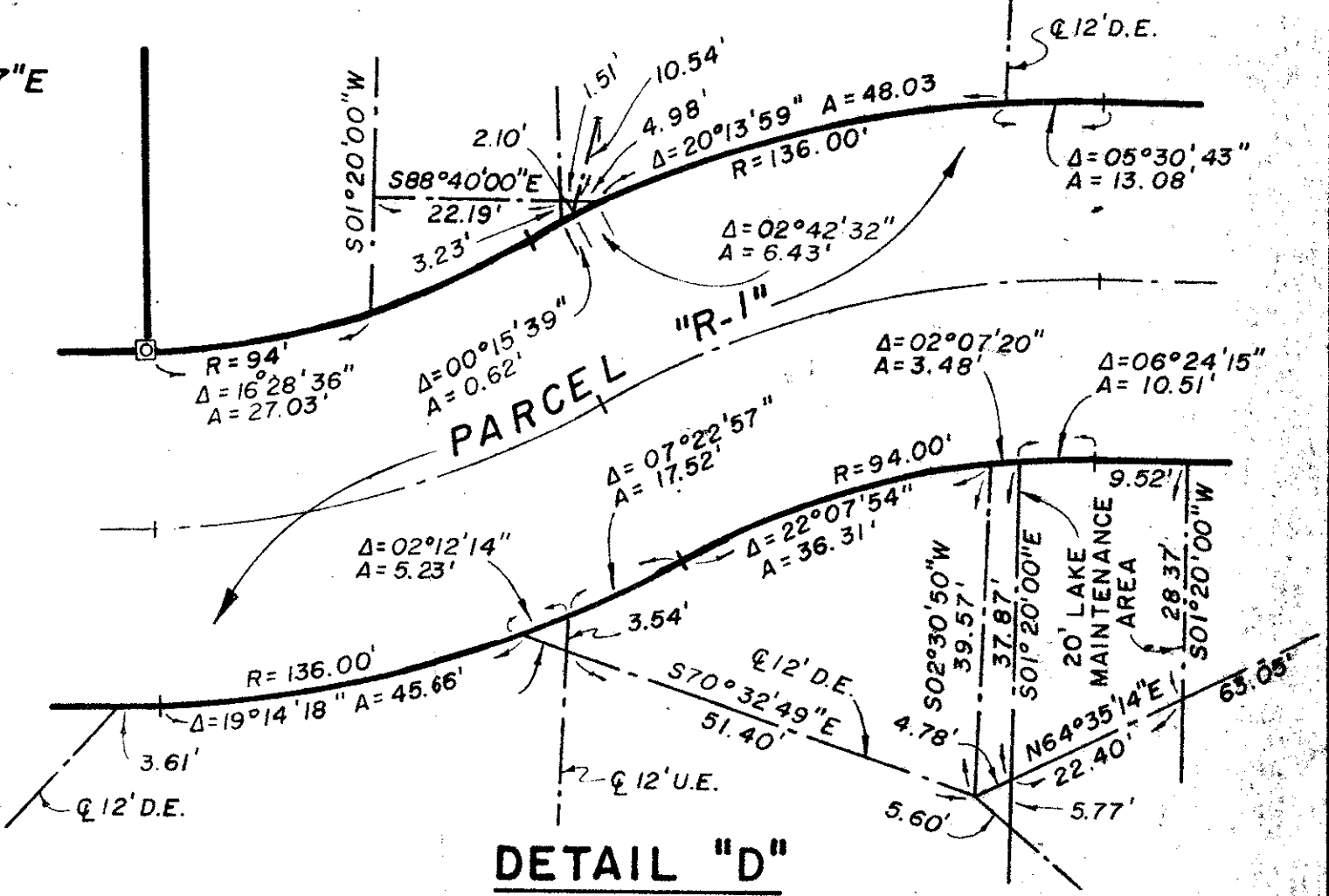
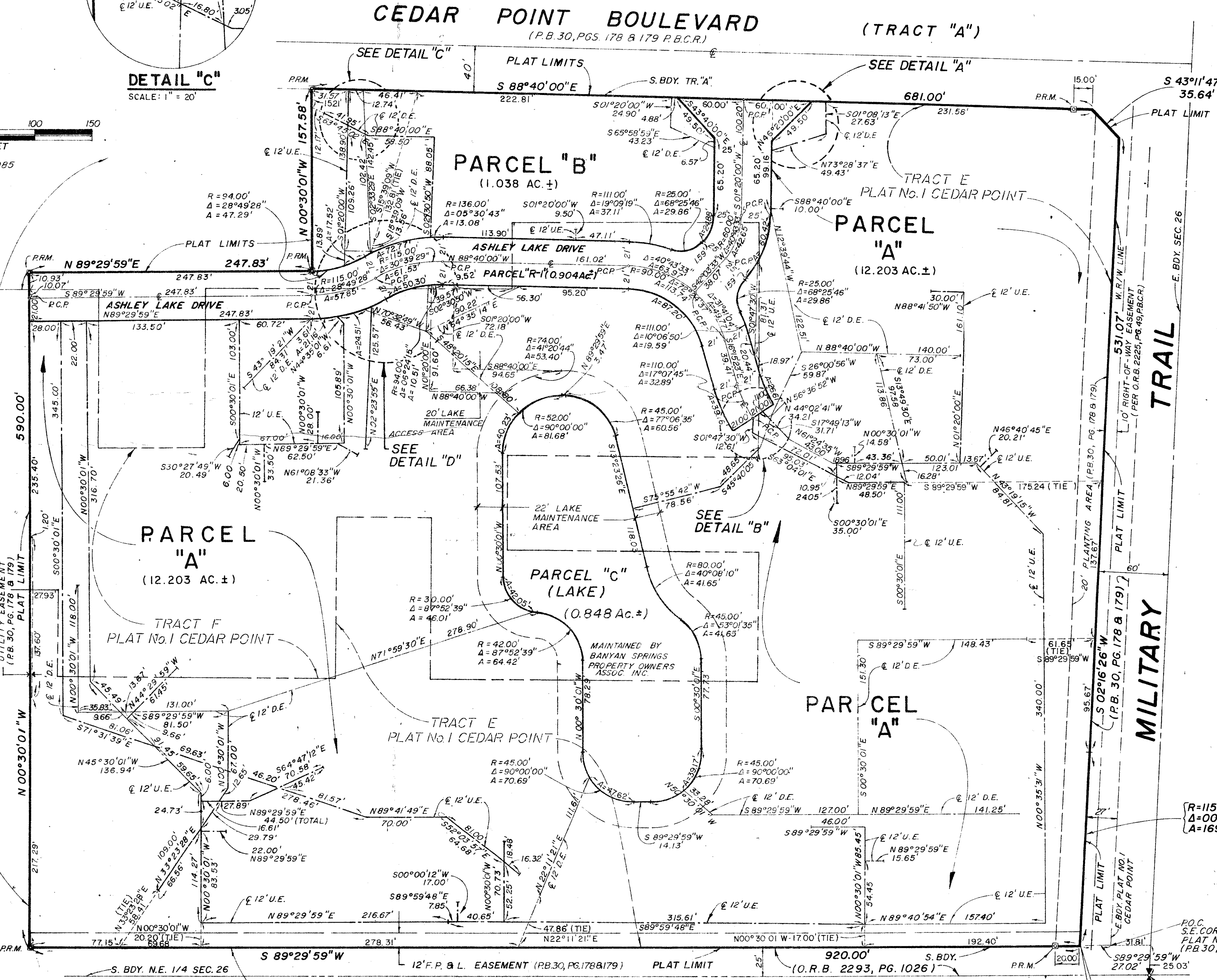


DRAWING NUMBER

DRAWING NUMBER

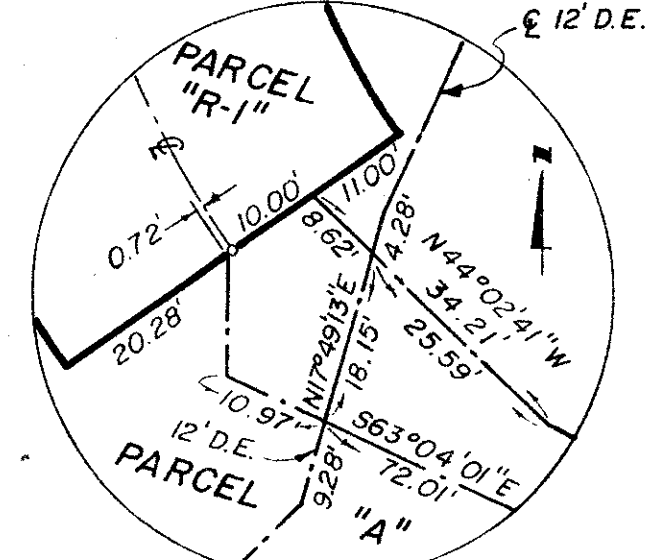
DRAWING NUMBER

PLAT No. 1, CEDAR POINT
(P.B. 30, PGS. 178 & 179, P.B.C.R.)



SURVEY NOTES:

1. PRM INDICATES PERMANENT REFERENCE MONUMENT.
2. BEARINGS SHOWN HEREON ARE BASED ON PLAT No. 1 CEDAR POINT (P.B. 30, PGS. 178 & 179 P.B.C.R.)
3. U.E. INDICATES UTILITY EASEMENT.
4. D.E. INDICATES DRAINAGE EASEMENT.
5. P.C.P. INDICATES PERMANENT CONTROL POINT.
6. NO BUILDINGS OR ANY KIND OF CONSTRUCTION SHALL BE PLACED ON UTILITY OR DRAINAGE EASEMENTS.
7. NO STRUCTURES, TREES OR SHRUBS SHALL BE PLACED ON DRAINAGE EASEMENTS.
8. APPROVAL OF LANDSCAPING ON UTILITY EASEMENTS OTHER THAN WATER OR SEWER SHALL BE ONLY WITH APPROVAL OF ALL UTILITIES OCCUPYING SAME.
9. UNDERLYING EASEMENTS & ROADWAY PER PLAT No. 1, CEDAR POINT (P.B. 30, PGS. 178 & 179) HAVE BEEN ABANDONED PER RESOLUTION No. R-78-935 (O.R.B. 2914, PG. 605)



0226-001
PLAT LIMIT

ASHLEY LAKE PARK